

La Crosse Symphony Orchestra

ALEXANDER PLATT | MUSIC DIRECTOR

Non-String Instrument Auditions

for the La Crosse Symphony Orchestra

**Auditions will take place between
Sunday 6/8/2025 and
Monday 6/9/2025**

Specific times will be available closer to the audition date.

Location:

Leithold Music

116 4th Street South,
La Crosse, WI 54601

The La Crosse Symphony Orchestra, on behalf of Music Director Alexander Platt, announce auditions for the following vacancies:

Principal Flute

Principal Trombone

Bass Trombone

Principal Horn

2nd Trombone

Utility Oboe

Process:

Send your one-page resume to:

Personnel Manager - Colin O'Day at personnel@lacrossesymphony.org

**Mail a \$50 refundable deposit check
postmarked by Friday 5/23/2025 to:**

La Crosse Symphony Orchestra
201 Main Street Suite 230
La Crosse, WI 54601

Upon the receipt of the check, your time slot will be reserved.
Audition repertoire can be found on our website.
At the audition, your check will be returned to you.

(608) 783-2121

LaCrosseSymphony.org



LA CROSSE SYMPHONY ORCHESTRA **2nd OBOE & ENGLISH HORN EXCERPTS**

Mozart Oboe Concerto in C Major, KV 314 (285d) m 32-76

2nd oboe excerpts:

Haydn Variations - Chorale, measures 1 - 29

Dvorak 7 - Movement 2, measures 1 - 8

Mendelssohn 3 - Movement 2, measures 32 - 67 and 88 - 100

Bartok Concerto for Orchestra - Movement 2, measures 25 - 45 and 180 - 198

Mozart Piano Concerto 21 - Movement 2, measures 95 - 104

English horn excerpts:

Dvorak Symphony 9: 2nd movement, measures 7 - 18

Ravel Piano Concerto: 2nd movement, rehearsal 6 to rehearsal 9

Roman Carnival: measures 21 - 37

William Tell Overture: Andante, 30 after E to 18 before H

Debussy Nocturnes: 2nd movement, beginning to 9 after rehearsal 3

Johannes Brahms
Variations on a Theme by Haydn, Op. 56a

Oboe II

Chorale St. Antoni
Andante

ten. ten.

p *f* *pp* *dim. smorz.*

Var. I
Poco più animato

Viol. I

mf *f* *dim.* *p*

Var. II
Più vivace

f *p* *dim.*

Var. III
Con moto

p dolce e legato

p *A* *Ob. I* *B* *C* *6* *Ob. I* *1 rit. 3*

Dvorak — Symphony No. 7 in D Minor, Op. 70

Oboe II

II.

Poco Adagio.

p legato. *pp* *p* *dim.* *pp*
f dim. *pp* *sf dim.* *p* *pp*
f *pp* *mf* *dim.*
mf *mf* *mf* *f*
ff *p* *mf* *f*
p *f* *ff* *dim.* *pp*
pp *ff* *ff* *dim.* *pp*
ff *f* *f* *f* *f* *f* *ff* *ff* *ff* *pp*
pp *cresc.* *f* *f* *pp*

SCHERZO.

III.

Vivace.

f *dim.* *p* *f* *mf*
ff *cresc.* *tr.* *ff*

Mendelssohn — Symphony No. 3

OBOE II

473 *cresc.* *Assai animato*
cresc. ff *dim.* *ff* *fff* *ff*

485

493 *ff*

502 *P* *9* *Andante come I* *2* *attacca*
ff *p* *f* *p* *sf* *dim.*

Vivace non troppo *1* *20* *mf*

34 *cresc.* *f*

42 *f* *cresc.* *ff*

56 *f* *f* *f* *f*

64 *B* *19* *Clar.* *C* *pp*

90 *pp* *pp*

97 *ff*

115 *ff* *1 D II*

4 *al* *Tempo I* 2nd OBOE

488 1 2 494

500 1

509 1 2

514 1 3 521

f *ff* *ff* *f*

II. GIUOCO DELLE COPPIE

Allegre scherzando

9 6 17 1 4

Ist. Bsn. etc.

Ist. Bsn. *p* *f*

p *f* *mf*

33 *sempre stacc.*

41 *cresc.*

45 1 **TACET** 159 1

Ist. Ob.

185 6 173 1 4 Ist. Bsn. *Poco rit.*

Ist. Bsn. etc.

tornando - al - Tempo I

2nd OBOE

5.

181 *p* *f* *mf* *p* *sempre stacc.* 189 *mf* *cresc.*

198 1 1 5 205 1 *f* Pochiss rit. a tempo

212 6 1st Ob. *p*

219 1 Poco rall. 1 1 a tempo 225 *mf* *f*

228 1 6 235 1 2 241 1st Trpt. *f*

248 4 1 252 1 3 258 1 Fis. *p*

263 1 2 *pp*

Detailed description: This is a page of a musical score for the 2nd Oboe. It contains eight staves of music. The first staff is in bass clef and contains measures 181-189. The second staff is in treble clef and contains measures 189-198. The third staff is in treble clef and contains measures 198-205. The fourth staff is in treble clef and contains measures 205-212, with the label '1st Ob.' below it. The fifth staff is in treble clef and contains measures 212-219. The sixth staff is in treble clef and contains measures 219-228, with the label '1st Trpt.' below it. The seventh staff is in treble clef and contains measures 228-241, with the label 'Fis.' below it. The eighth staff is in treble clef and contains measures 241-263. The score includes various dynamics such as *p*, *f*, *mf*, *pp*, and *sempre stacc.*, as well as performance instructions like 'tornando - al - Tempo I', 'Pochiss rit. a tempo', and 'Poco rall. a tempo'. Measure numbers are boxed in the original image.

Oboe II

Andante

Musical score for Oboe II, Andante section, measures 7-101. The score is written in treble clef with a key signature of two flats (B-flat and E-flat). The tempo is marked 'Andante'. The music features various dynamics including *sfz*, *sf*, *p*, *f*, and *pp*. Fingerings are indicated by numbers 1-5. There are several slurs and accents. Measure numbers 7, 17, 35, 48, 68, 94, and 101 are marked at the beginning of their respective lines. A section labeled 'A' begins at measure 35, and a section labeled 'C 5' begins at measure 68. The piece concludes with a *pp* dynamic at measure 101.

Allegro vivace assai

Musical score for Oboe II, Allegro vivace assai section, measures 1-114. The score is written in treble clef with a key signature of two flats (B-flat and E-flat). The tempo is marked 'Allegro vivace assai'. The music features various dynamics including *p*, *f*, and *pp*. Fingerings are indicated by numbers 1-5. There are several slurs and accents. Measure numbers 2, 14, 32, 44, 58, and 114 are marked at the beginning of their respective lines. A section labeled 'A 52' begins at measure 52. The piece concludes with a *p* dynamic at measure 114.

Dvorak — Symphony No. 9 in E Minor, Op. 95 "New World"
Oboe II. e Corno Inglese.

3

13

fff

fz fz fz

II.

Largo.
Englisch Horn. (Corno inglese.)
Solo.

pp

pp

f

1 Ob. II.

Engl. Horn. Solo.

Un poco Ob. II.
2 più mosso Poco meno mosso.

pp dim. pp

3 Poco più mosso. Meno 4

13 12

Ob. II.

Engl. Horn. Solo.

5 Meno mosso (Temp. I.)

rit. dim. p

1 9 rit. 3

vello. Ob. II. rit. Molto Adagio.

pp p-pp 1

Oboe, Corno Inglese

8

OBOE

6

13

CORNO I. *f*

1

Solo

pp espressivo

7

p

8

9

f

p

10

2

pp

p

f

5

Hector Berlioz
Roman Carnival Overture, Op. 9

Oboe II
(Corno inglese)

Allegro assai con fuoco (♩=156)

1 Ob. II *f* 6 G.P.

Corno ingl.
Andante sostenuto (♩=62) *solo*
mf espress.

cresc. *f* 7 *mf*

cresc. *f*

3 *mf* *poco cresc.*

4 *f* *pp* 3 *p cresc. f* Ob. II 3

Ob. II **poco animato** 5 *mf* *f* *mf* *f*

Tempo I Allegro vivace Ob. I 14 3

Rossini — William Tell Overture
Oboe I u. Englisch Horn.

2

Engl. Horn. $\text{E} \text{ } 1$

7 17 18 19 20 21 22

Engl. Horn.
Andante. ($\text{♩} = 76$)
Solo.
dolce

dolce

Allegro vivace. ($\text{♩} = 152$)
Oboe. 17 H 4

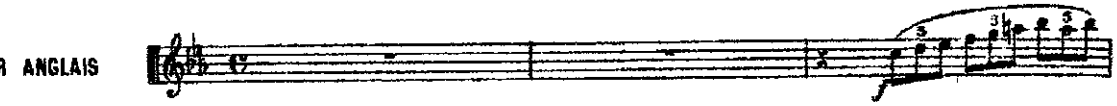
Oboe.

Viol. I. *ff* *pp* *ff* *ff*

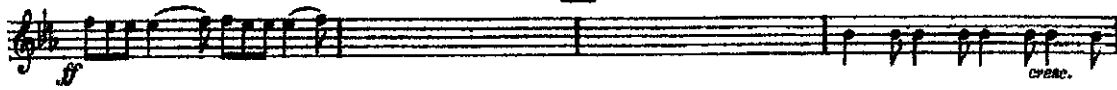
N° II. - Fêtes

Animé et très rythmé

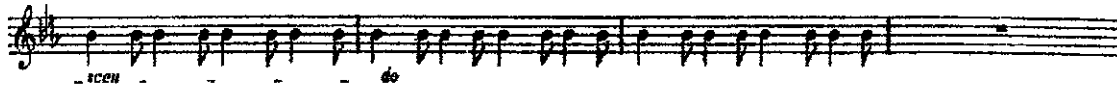
1 COR ANGLAIS



1

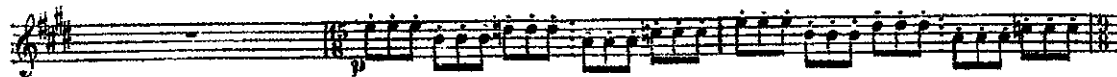
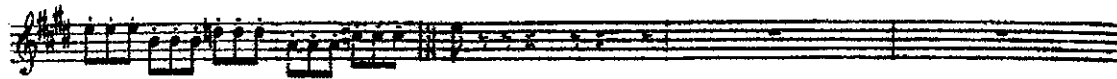
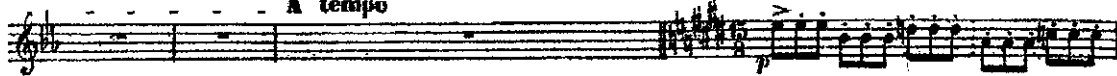


retenu - - -



A tempo

2 Un peu plus animé



3

